



Mordialloc
Neighbourhood House

Semester 1

***20th January to
4th April
2025***

OUR VISION

MORDIALLOC Neighbourhood House has an open door to the community providing a meeting place for groups, educational and recreational activities for adults and children in a safe and friendly environment.

Mordialloc Neighbourhood House acknowledges the support of the Victorian Government and the following sponsors:



We look forward to welcoming you

457 Main Street, Mordialloc 3195

PO BOX 5042, MORDIALLOC 3195

Phone: 03 9587 4534

Email: admin@mordihouse.com.au

Office hours:

Monday—Friday 9am-3pm

ABN 46371331674

www.mordihouse.com.au

MNH acknowledges the traditional owners and custodians of the land on which we work, learn and play, the Bunurong people of the Kulin Nation. We pay our respects to them, their culture and their Elders, past, present and future.



Did you know you can now follow us on:

- **Instagram**



www.instagram.com/mordihouse3195/

- **Facebook**



www.facebook.com/MordiNeighbourhoodHouse

- **Website**



www.mordihouse.com.au

ACFE FUNDED PROGRAM FEES

COURSE Name	HOURS	TERMS	AUSTRALIAN RESIDENT PER TERM	NON-RESIDENT OF AUSTRALIA PER TERM
BARISTA BASICS * Delivered at Mordialloc	10	2,3 & 4	\$25 Covers course materials	\$50
DIDGITAL ESSENTIALS AND DIGITAL FOR JOB SEARCH Delivered at Mordialloc and Clarinda	20	1,2,3 & 4	\$5.00	\$50
ESL-ENGLISH FOR LIFE Delivered at Clarinda	30	1,2,3 & 4	\$5.00	\$50
AUSLAN LEARN TO SIGN LEVEL 1 Delivered face to face at Mordialloc	20	1,2,3 & 4	\$10 Covers course materials	\$20

Please note, should the house be required to close for any reason we will contact you via telephone.
\$15 annual non-refundable membership fee applies for all students.

ACFE FUNDED PROGRAM INFORMATION

Asterisk meaning:

*This is a 2 day course and the fee is for the 2 days.

Resident Status:

Student must be an Australian citizen or have a permanent resident visa, a green Medicare card holder

Payment:

All fees must be paid in full prior to commencing the course. We accept cash, cards and direct debit.

Bookings:

To reserve your place in any of our courses we require you to complete an enrolment form and return it to the office prior to commencement of the course. Enrolment forms can be obtained by contacting the office on 03 95874534 or email admin@mordihouse.com.au
For more information, please see terms and conditions at the back of this brochure.

ACFE:

MNH is registered with the Adult, Community and Further Education (ACFE) Board. The quality and structure of all pre-accredited programs is regularly reviewed by the ACFE Board. More information about the ACFE Board is available on the Department of Education and Training's website.

<https://www.education.vic.gov.au/training/providers/learnlocal/Pages/acfe.aspx>

Subsidised Fees For ACFE Funded Courses:

With the assistance of Adult Community and Further Education, Mordialloc Neighbourhood House is able to offer subsidised fees for Concession Card holders.

TERMS & CONDITIONS FOR MNH RUN PROGRAMS

REFUNDS:

Please choose your classes carefully; we cannot be responsible for changes in your circumstances. Refunds will be issued if at least seven (7) days' notice is given prior to class commencement date. An administrative fee of \$15 (\$20 for childcare) will be deducted from refunds.

Annual Membership fee is non-refundable.

We regret that from time to time classes with low enrolments may be cancelled or deferred by Management. You will be advised of this decision prior to the commencement date. On these occasions a full class refund will be issued.

DISCLAIMER:

MNH reserves the right to cancel or change class days, times, fees and tutors as necessary.

MEMBERSHIP FEES:

Becoming a member of MNH entitles you to vote and elect the Committee of Governance at the Annual General Meeting. You can also nominate yourself for a position on the Committee or one of the sub-committees. The fee gives you access to all our courses.

The annual membership fee is \$15 and is payable at the start of the year or upon enrolment. This is a per family fee.

PUBLIC HOLIDAYS:

There will be no classes (adult or childcare) on public holidays (except in special pre-arranged circumstances)

ENROLMENT POLICY:

Enrolments will be confirmed on payment of a non-refundable \$15 deposit, which will be retained as part of your final payment. Payment in full is required five (5) working days prior to class commencing. However, if you are having difficulties, a regular payment plan can be arranged with the Manager.

PROTECTING YOUR PRIVACY:

The information collected in relation to participants will be held in accordance with the Information Privacy Act 2009. MNH shall ensure it complies and shall not disclose any such information except in accordance with the provisions of the Privacy Act.

COMMENCEMENT OF CLASSES

Commencement of all classes is subject to sufficient enrolments. Should a class be cancelled, or there is a change in day or time, MNH will notify you and your monies refunded if required.

Otherwise, please attend your first class as advertised.

Thank you.

BRAD RECYCLING PROGRAM

A green poster for the BRAD Recycling Program. The text 'recycle with BRAD' is prominently displayed in white and yellow. A circular logo with 'RECYCLING PROGRAM' is in the top right. Below the title, a list of accepted items is provided in two columns. At the bottom, it says 'Making recycling easy!' and 'banish.com.au'.

recycle with BRAD

What BRAD accepts:

- Blister packs
- Empty beauty & skincare containers
- Mascaras & lipsticks
- Cosmetics
- Plastic tubes
- Bread tags
- Single-use coffee cups
- Single-use cutlery
- Milk bottle tops
- Contact lenses
- Pumps & sprays
- Toothbrushes
- Floss containers
- Toothpaste tubes
- Soy sauce fishies
- Old pens & markers
- Coffee pods

Making recycling easy!
banish.com.au

who is BRAD?

BRAD stands for the Banish Recycling and Disposal program it's one of Australia's largest specialty recycling programs, helping thousands of Aussies recycle tricky household items like blister packs, beauty products, bottle top lids and SO MUCH MORE!

We recycle your items with trusted Aussie recyclers, making it super easy to recycle right and live sustainably!

AUSLAN—LEARN TO SIGN (ACFE funded)

Level 1 Auslan (Australian Sign Language) course will offer you an introduction to the language used in the Deaf community, as well as an insight into Deaf Culture.

You'll cover the alphabet, finger spelling, greetings, colours, transport, food and numbers to name a few.

Time: 9:30am to 11:30am Fridays @ Mordialloc

Dates: 7th February to 4th April 2025



ESL— ENGLISH FOR LIFE (ACFE funded)

This class is designed to improve language skills for employment, volunteering and further training or studies.

Our class focuses on skills such as speaking, writing, reading and listening. This will help you to better participate and engage in your community and understand language for everyday living.

Time: 9:30am to 12pm Mondays @ Clarinda Community Centre

Dates: 3rd February to 31st March 2025

Public Holiday 10th March 2025



DIGITAL ESSENTIALS AND DIGITAL JOB SEARCH (ACFE funded)

Digital Essentials:

Participants will learn how to keep in touch with family and friends, access government health and essential services, and use the internet safely all while developing skills to help for volunteer work, employment or further study.

Time: 9.30am — 11:30pm Tuesdays @ Clarinda

Digital Job Search:

Participants will learn how to effectively search and apply for jobs online while developing skills for employment.

Time: 12:00pm — 2:00pm Tuesdays @ Clarinda

Class Start: 10th February—1st April 2025



BARISTA BASICS (ACFE funded)

Barista Basics is a two day practical course designed to prepare you for work or training in the busy café scene.

This course will teach you how to operate a commercial espresso machine, set the grind, extract a perfect espresso, texturize milk and pour a range of coffees.

Time: 9.30am — 2.30pm 2 days (normally Mondays and Tuesdays)

Please contact office for next dates



YOUTH BARISTA TRAINING

This is a two day practical course designed to prepare you for work or training in the busy café scene.

This course will teach you how to operate a commercial espresso machine, set the grind, extract a perfect espresso, texturize milk and pour a range of coffees.

Program delivered to those aged 14 years and 9 months and older

Time: 9.30am — 2.30pm 2 days - Cost \$50.00 Inc. GST

Next Course 7th-8th April 2025

Please contact the office for more information.

WEAVING MORDIALLOC TOGETHER

Come be part of a great community project and meet new friends. Participants need to bring their own 100% natural fibre (cotton/bamboo) fabric and Scissors. We will be weaving onto hoops, which are provided when donating to the project.

Every Tuesday Morning 9am –11am or

Fortnightly Tuesday evenings 6-8pm starting 4th February



TRAINING



REMEDY FIRST AID AND REMEDY MENTAL HEALTH FIRST AID

At Remedy First Aid Training we are passionate about health and wellness and believe everyone should be prepared with basic First Aid skills as you never know when you will need these important life skills.

All courses are engaging, leaving learners feeling empowered and confident to apply their learnt skills. With a range of course delivery options available, there's something to suit everyone.

Safety and compliance is important and we recognise the vital importance of not leaving safety to chance. We'll work with you to achieve compliance with First Aid requirements and make your workplace safer for everyone. We have you covered with lifesaving Defibrillators and a range of First Aid kits available to meet your First Aid needs and keep everyone safe. Get in touch today!

Courses for First Aid Training and/or CPR run monthly.

Contact

(03) 9111 0283 or info@remedyfirstaidtraining.com.au

www.remedyfirstaid.com.au

Next Course Dates

January 18th 2025

READING ROCKETS

Reading Rockets is a one-hour school readiness class for 4-5 year olds. The focus at Reading Rockets is on reading, writing and numeracy (maths) skills. Sessions are fast-paced and fun combining a number of hands-on activities, games, craft, songs and chants.

Term Based Mon 9:15-10:15am / Mon 10:30-11:30am/Mon 11:45am-12:45pm

For bookings contact Amanda: 0420503995 / amanda@readingrockets.com.au

www.readingrockets.com.au/classes.html



FAIRY DEB

Music and Movement classes pre-school music classes for parents/carers and their children aged between 6 months and 5 years.

The classes are new, educational and interactive with the use of rhythm instruments, puppets and props, stories, bubbles, rhymes, games and plenty of singing and dancing!

Music and movement is proven to accelerate children's learning by engaging all their senses, all while having loads of fun!

Term based Wednesday 9.30am-10.30 am

To book your spot Contact Deb [0427 720 410](tel:0427720410) or dgolden270@gmail.com

www.fairydeb.com.au/music-classes/



GAMES CLUB

Are you interested in a fun and friendly social group?

Then come join us for a chat and a round or two of Uno or other board games. This group is suitable for all abilities and skill levels.

Tuesday's 10am—11:30am
Free Class



SOCIAL ART & CRAFT

Our weekly self directed art and craft class is for people who want to create art with friends or meet new friends . All skill levels welcome and coffee and tea is provided.

Wednesdays' 9.30am —11.00am

Free Class



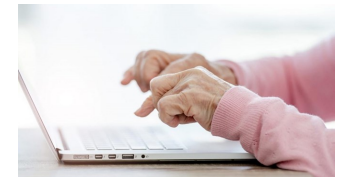
SAVVY SENIORS

Are you over 60 and need some help with your device?

We have a free drop in class that might be the answer!!

Fortnightly on Wednesday 11:30am—12:30pm

Free Help



MINDFUL MEDITATIVE YOGA WITH MARGIE

Yoga promotes health and wellbeing. This class is a mindful meditative class focussing on gentle yoga postures, stretches and breathing techniques. Yoga Nidra is a technique in which the body settles into deep relaxation and can be thought of as a way to prepare for meditation.

BYO yoga mat and blanket and wear loose and comfortable clothing. The class is suitable for all levels—beginners welcome. All participants must complete a Physical Activity Form.

Tuesday: 4th February— 1st April 10:30am—11:30am

Thursdays: 6th February —3rd April 10:30am —11.30am

\$5 per class Inc. GST



QUILTING WORKSHOP

Are you looking for an activity that will help you unplug from technology and instead spend some time learning a new skill? How does a beginner-friendly quilting class sound!

Join us for a 4 week quilting workshop where you will be guided through the step by step process of creating your own quilt from our quilting expert Ann. You will learn how to use a sewing machine and then learn the basic skills to be able to use patterns to measure, pin and stitch together a beautiful quilt entirely by yourself!

Starting every Monday

3rd February for 4 weeks from 10am –12pm

BYO equipment

Bookings essential and limited places available. Please contact the office for requirements

\$52 four 4 classes.



KOALA PROGRAM

Our Koala room supports families by providing flexible care for children from 6 months to school age. Our program is a play based program that follows the Early Years Framework.

This service allows parents the opportunity to introduce their children to care by enrolling them for short periods at a time with a maximum stay of 15 hours per week. We offer both casual and permanent positions.

Monday, Tuesday, Wednesday, Thursday and Friday: 9:15am - 2.15pm

Fees: \$67 per day. CCS rebate available

If you are not eligible for CCS please contact the office

Two weeks notice must be given in writing for any changes made to a permanent booking. If you have any questions regarding the fees please see the manager to discuss.



CHILDREN'S SERVICES & PROGRAMS

GUMNUTS PROGRAM

Gumnuts is for 3 & 4 year old's and designed to enhance the developmental, social, emotional and language skills of young children. Our small numbers allow us the opportunity to assist each child on an individual basis to ensure they get the best start for their school years ahead. Children attending Gumnuts must turn 3 prior to April 30 in the year of attendance.

The Gumnuts program is split with the morning being a structured learning environment and the afternoon encouraging social skills through play.

Monday, Tuesday, Wednesday, Thursday and Friday's 9.15am-2.15pm.

You can Attend 1,2 or 3 days to a maximum of 15 hours per week.

Fees: \$67 per day. CCS rebate available.

If you are not eligible for CCS please contact the office

Two weeks notice must be given in writing for any changes made to a permanent booking. If you have any questions regarding the fees please see the manager to discuss.



GERMAN

This course is designed for those who wish to improve their skills in German grammar, vocabulary and conversation. It also provides students with an understanding of the country's culture and customs.

Students with limited experience will also be catered for in this course.

Thursday 6th February—3rd April 6pm—8pm

\$13 per class when paying for the term up front

or \$15 casually Inc. GST



STITCH-SEW-CREATE

In a friendly and supportive group, you will have the opportunity to learn a variety of sewing, quilting, stitching styles and how to follow dressmaking patterns. All levels welcome. BYO Sewing machine, sewing kit, patterns and materials. Limited sewing machines available, if you do not have one.

Fridays 7th February—4th April

10:00am - 12.00pm or 12.30pm—2.30pm

\$13 per class when paying for the term up front

or \$15 casually Inc. GST



SCRAPBOOKING

A friendly group, that meets the third Saturday of each month. You will have the opportunity to learn and share new ideas. BYO materials and projects.

Once a month on Saturday's: 10am - 6pm . You can stay as little or as long as you like. Starting 18th January 2025.

\$126 for the year or \$15 per session Inc. GST.



MOTHER GROUP

Our mothers group is a great way to meet other mothers with babies in the community. No matter if it is your first or third baby come share tips, tricks and experiences with people who understand. Tea and coffee provided.

Every Thursday Morning 10:30am –12:30pm

\$10 per term

PLAY GROUP

Come join us for a facilitated and interactive playgroup. We provide a safe, relaxed environment to have fun, build friendships and enjoy time with your children. Eligible children must be with a parent, grandparent or carer. Places are limited.

Wednesday 10:30am-12pm starting 5th February

\$45 for the term



CARERS GROUP

This is a support group for those caring for someone who is unwell or has a disability. Meeting on the third Thursday of the month we get together to take time out and spend time doing activities we often don't get an chance to do.

To book your place contact the office.

3rd Thursday of the month at 9:45am.

Free session

COMMUNITY COLLECTION



We are a drop point for many services who help those in our community near and far.

Pantry 5000

Clothes For Good

Share the Dignity

123 Read To Me

If you would like to know more about how you can help please call our office or visit the community tab on our

webpage www.mordihouse.com.au

CHRONIC PAIN AUSTRALIA

Meeting monthly Chronic Pain Australia aims to improve the knowledge and understanding of what it is like to live with and manage chronic pain amongst health consumers, carers, family, friends, and healthcare professionals. Chronic Pain Australia is committed to empowering chronic pain warriors to work towards supported self-management of their pain.

To find out more contact the office.

Monday's monthly 10am

Free session